

***Self-Contained
Power & Control
for
Spring-Return Actuators***

hydraPAK^{EZ}

***Featuring Pre-Assembled
Process Connections***

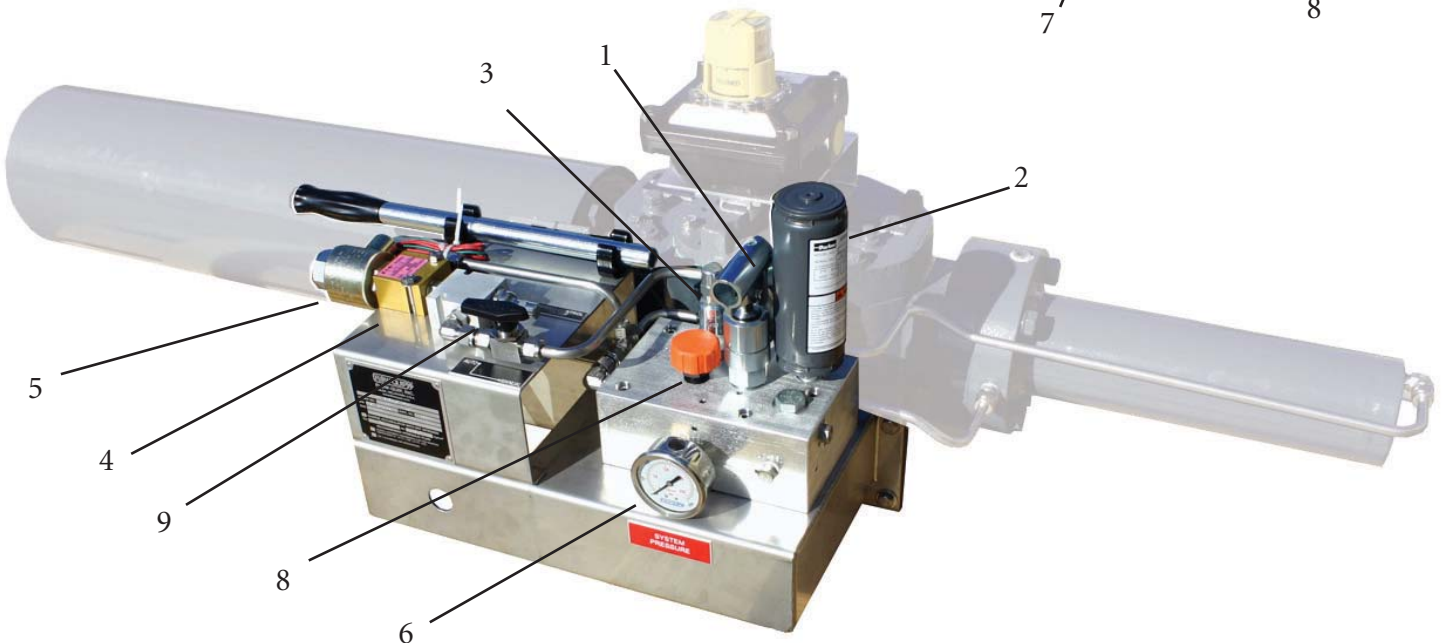
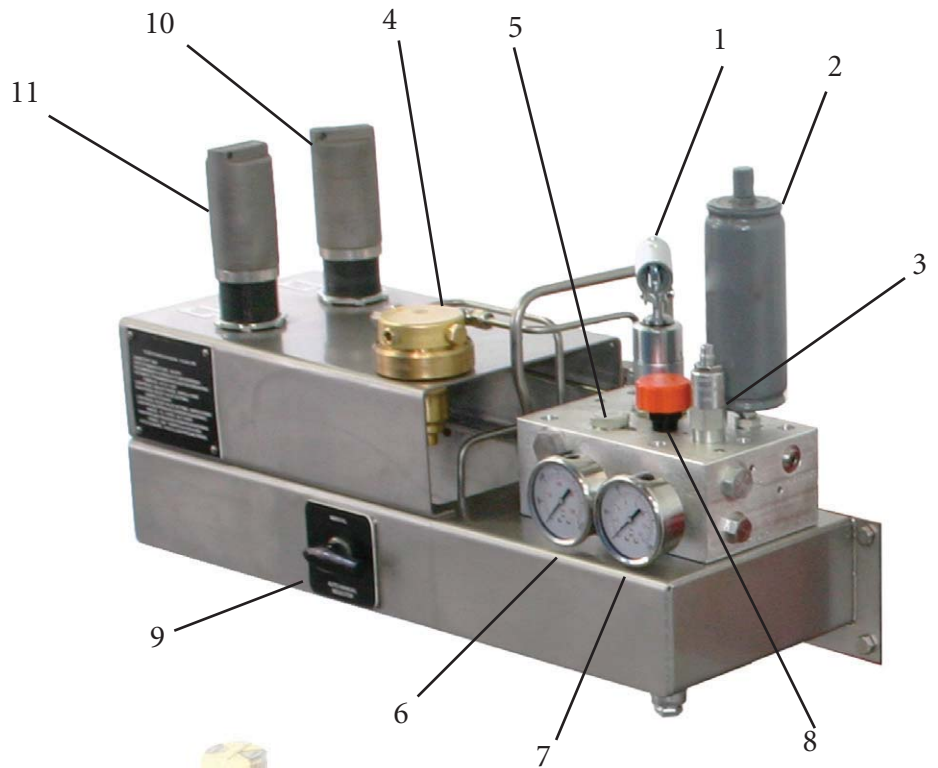


Flow-Quip hydraPAK^{EZ}

Power Units are self-contained manually operated hydraulic systems for control of spring-return valve actuators. The actuator provides failsafe operation of the valve, while the hydraPAK^{EZ} moves the actuator against the spring to the normal operation position. Process control connections are factory plumbed in the hydraPAK^{EZ} unit.

Features

1. Hand pump
2. Accumulator
3. Pressure relief valve
4. Regulator
5. Pilot valve
6. High pressure gauge
7. Low pressure gauge
8. Oil filler cap
9. Auto-manual valve
10. High pressure pipeline sensor
11. Low pressure pipeline sensor

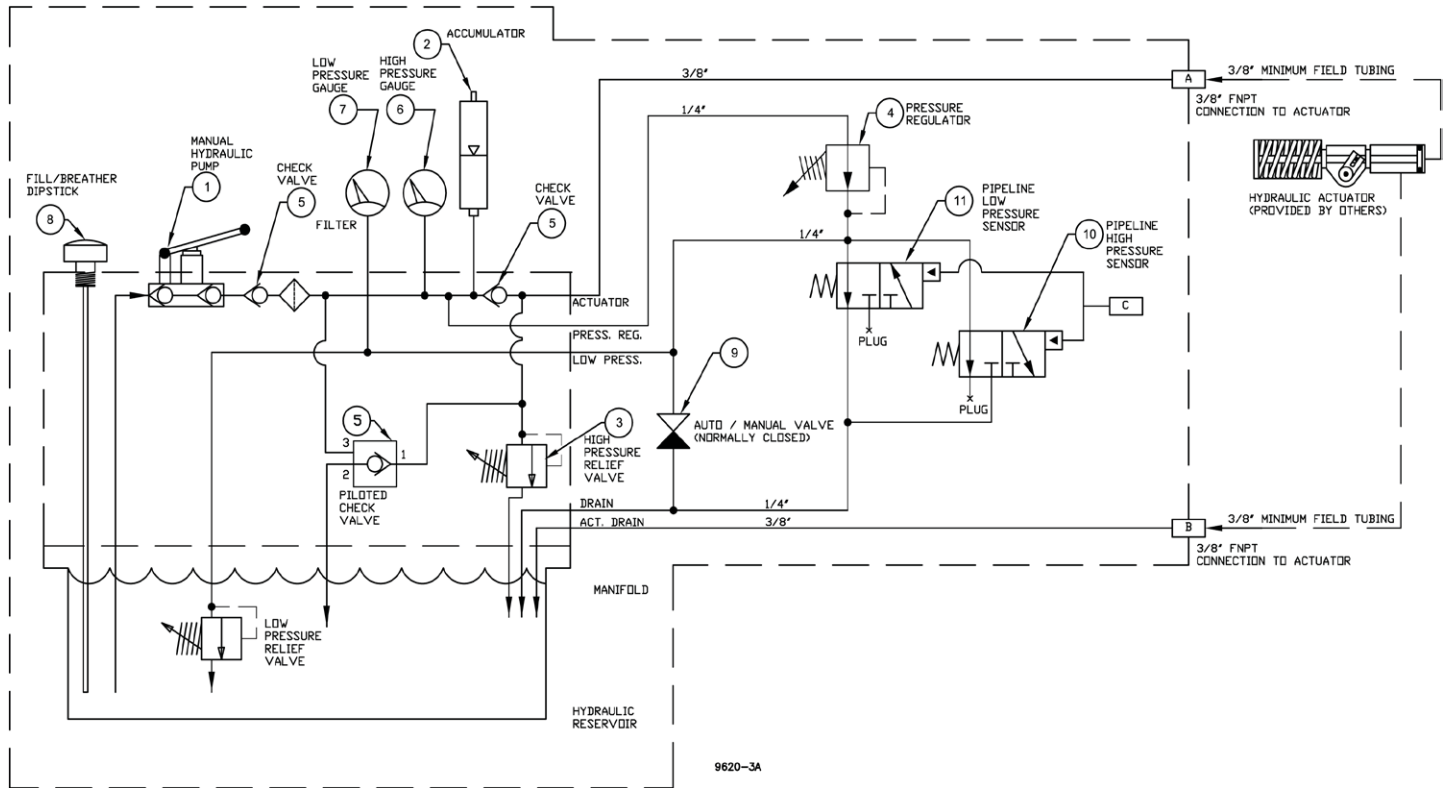




The Flow-Quip hydraPAK^{EZ} is a manually operated hydraulic power unit to provide manual operation of a hydraulic spring-return valve actuator. Completely self-contained, it includes a manual hydraulic pump, reservoir, accumulator, gauges, relief valves and a

latch valve. Options include high and/or low pipeline pressure sensors, high and/or low pressure gauges, solenoids, and fusible link. All components are pre-plumbed, requiring only one field connection to the actuator, and to the pipeline sensor(s) if provided.

Schematic Diagram



General Specifications

MODEL	Max Pressure PSI / Bar	Max Actuator Displacement US Gals / Litres	Pump Displacement in ³ / cm ³	Flow Capacity ¹ US GPM / LPM
EZL-1	150 / 10	1.0 / 3.78	1.3 / 21.3	5 / 18.9
EZL-2	150 / 10	2.0 / 7.56	1.3 / 21.3	5 / 18.9
EZH-1	1500 / 100	1.0 / 3.78	0.65 / 10.65	5 / 18.9
EZH-2 ₂	1500 / 100	3.5 / 13.23	0.90 / 14.75	5 / 18.9

1. The stated flow capacity governs the fail mode speed. It is the unrestricted flow returning from the actuator to the reservoir.
2. This model requires the lockable stainless steel enclosure option, which includes high volume pump and reservoir.

- Rotation:** 90° ± 5° (adjustable)
- Temperature range:** -5° to +140°F (-20° to +60°C)
- Optional temp range:** -50° to +140°F (-46° to +140°C)
- Elec. Control Signal:** 120 VAC or 12/24 VDC to FM, IEC ATEX
- Fire/heat control:** Fusible links available at 158°, 203°, 255°, 281°F (70°, 95°, 124°, 138°C)
- Pressure control sensors:** Available in stainless steel for your specified high and low pressure set points.

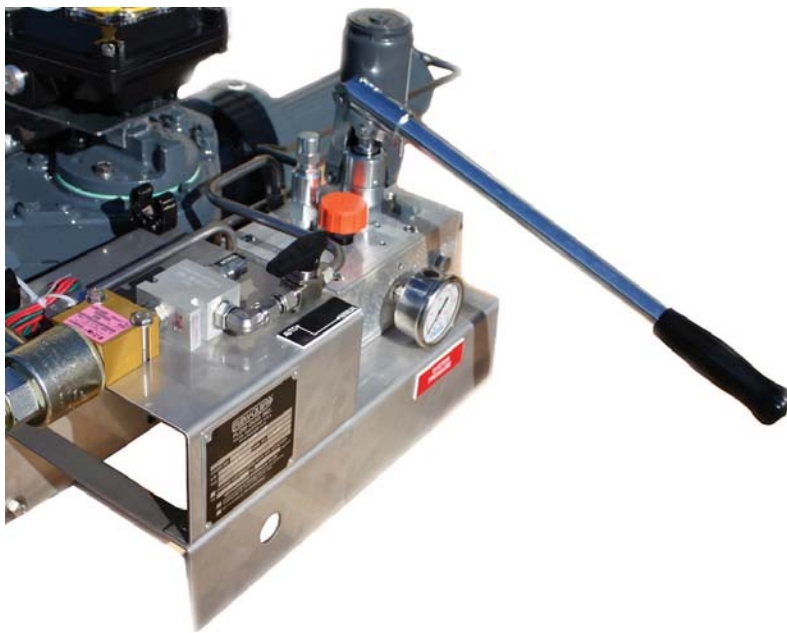
Self-Contained Power & Control for Spring-Return Actuators

Typical Applications

- ESD valves
- Overpressure/Underpressure protection

Features

- Fail open or close (specify with order)
- Simple hydraulic circuit, minimum components
- 100% self-contained - Eliminates need for plant air, fuel gas, electricity or expensive nitrogen backup systems
- Built in temperature compensation
- High pressure zero leakage control
- Integral terminal housing on solenoid controlled units
- Manual reset after operation
- Stainless steel tubing and fittings standard
- Easily mounted on new or existing valves or dampers



Options:

- Local electrical controls
- Power module may be remote from valve
- Corrosion resistant paint and trim
- Adjustable speed control
- High or low pressure pilot(s)
- High temp fire sensor(s)
- Lockable power module enclosure

Other Products Available from Flow-Quip

Spring-return failsafe actuators for ESD applications
Stored energy failsafe actuators for ESD applications
DC motor drive actuators
Hydraulic power units for valve automation
Solar powered valve actuators and power units
Custom modulating valve packages
Solar power supplies for all products

Services Available from Flow-Quip

Field survey of existing valves for retrofit
Field service and start-up assistance



Flow-Quip, Inc.

7440 East 46th Place
Tulsa, OK 74145
U.S.A.
(918) 663-3313
(918) 663-9034 fax
sales@flowquip.com
www.flowquip.com



ISO 9001